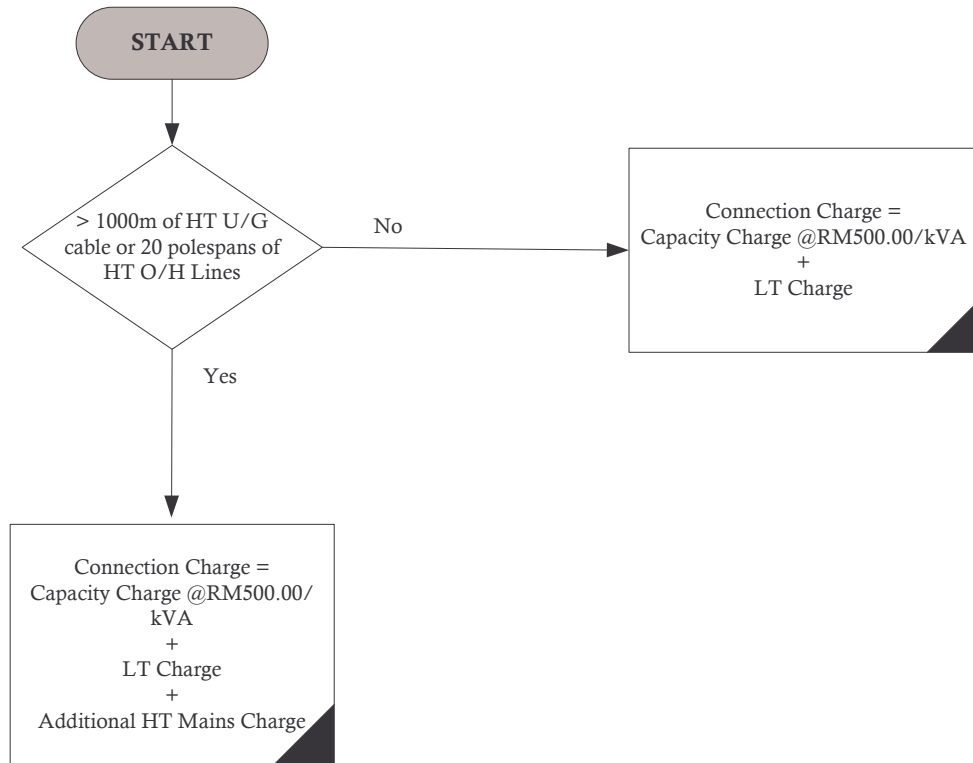


FLOW CHART FOR CATEGORIES 1 (HOUSING) AND 3 (SHOPHOUSE)

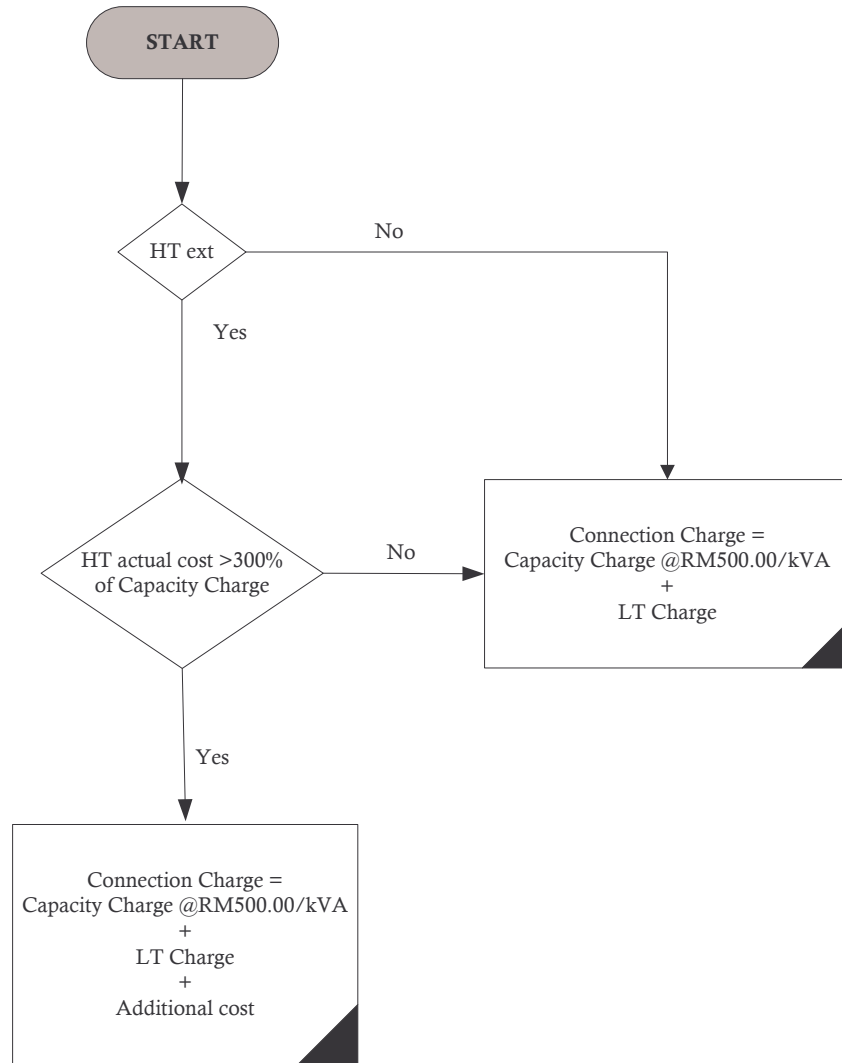


Additional HT Mains Charge	Electrical Distance	Rates in RM
HT U/G Cable	1000m to 2000m	100/m
	>2000m	200/m
HT O/H Lines	>20 pole spans	10,000/pole span

*** SPECIAL CASES :**

Mixture of U/G Cable & O/H Lines : 1 Pole span O/H Lines = 50m U/G Cable

FLOW CHART FOR CATEGORIES 2 (SINGLE PREMISES) AND 4 (INDUSTRIAL & OTHER PREMISES)

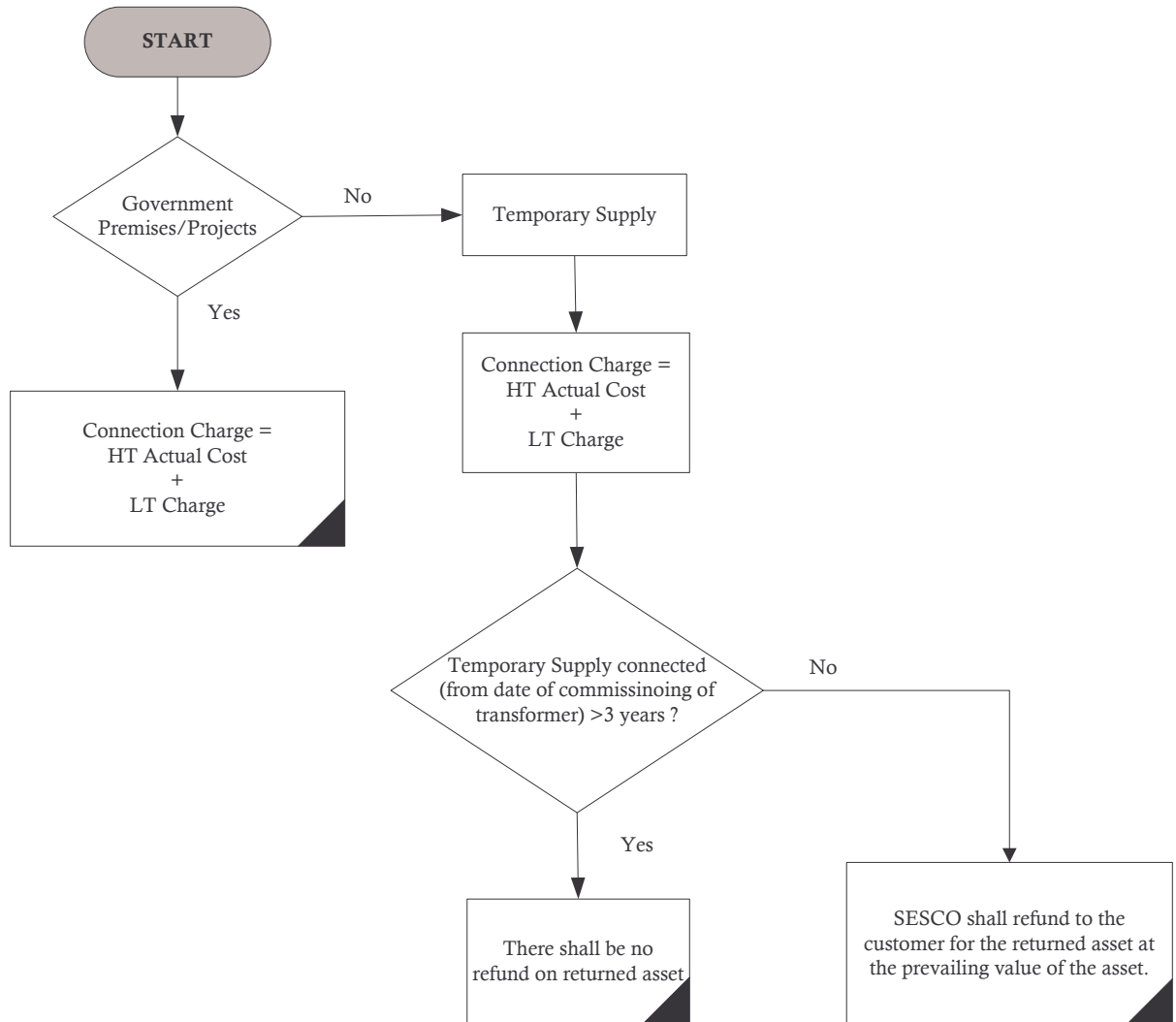


DEFINITION :

Additional Cost = HT Actual Cost - 300% of the Capacity Charge

HT Actual Cost = Costs of HT O/H lines + U/G Cable + Substation (all inclusive)

FLOW CHART FOR CATEGORIES 5 (GOVERNMENT PREMISES/PROJECTS) AND 6 (TEMPORARY PREMISES)



*** CALCULATION OF RETURN ASSET (Assuming 10 yrs asset life)**

CC Refund = Material cost for Txf/RMU/Pillar - Accumulated Depreciation - Cost to Dismantle

Accumulated Depreciation= $\frac{\text{Cost of Txf/RMU/Pillar}}{10 \times 12} \times \text{no. of month of the temporary supply}$